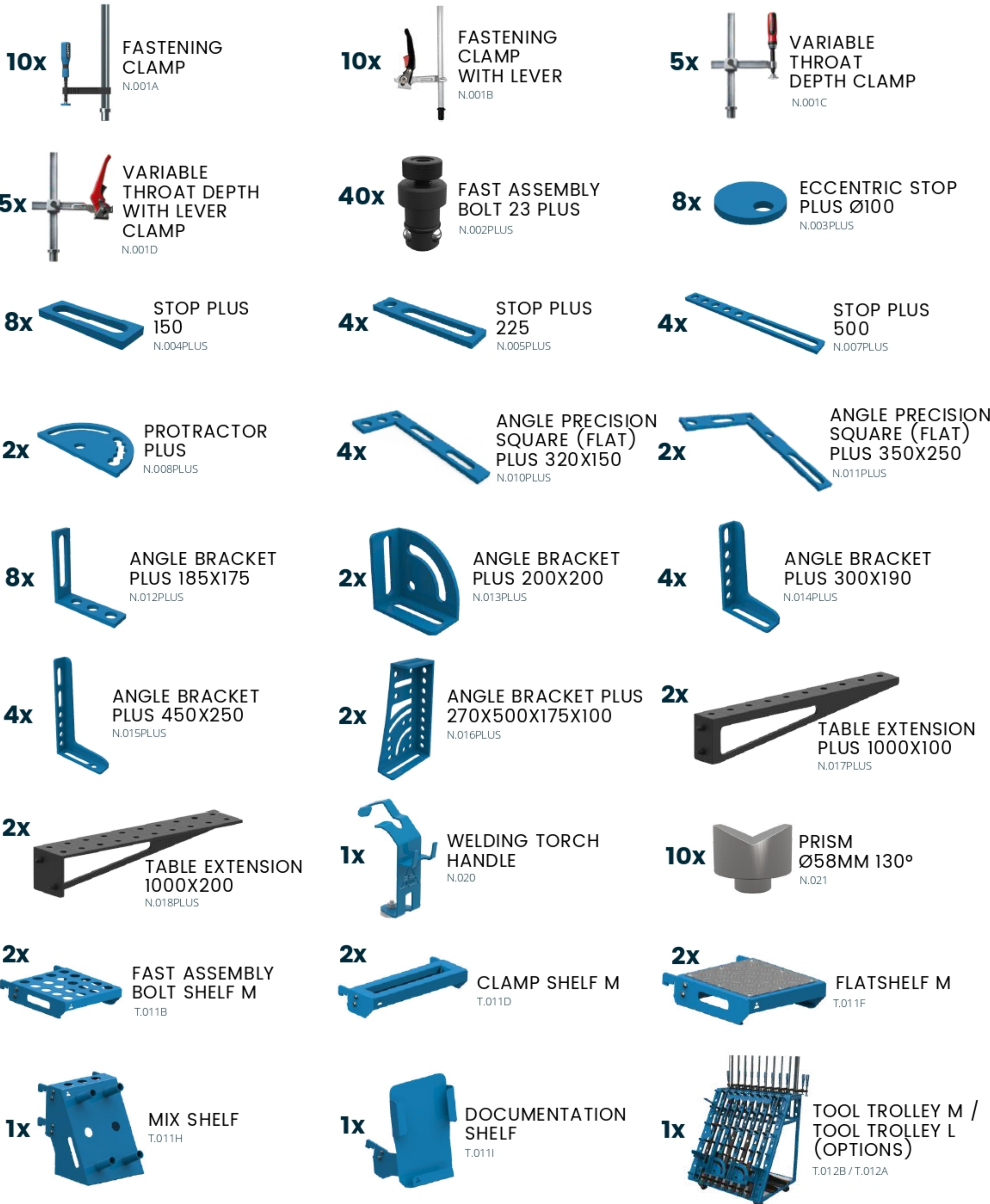


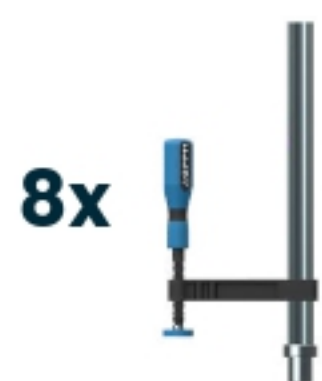
TOOLKIT^{PLUS} NO. 1

Number of jigs & fixtures included in the kit: 146



TOOLKIT^{PLUS} NO. 2

Number of jigs & fixtures included in the kit: 96



8x FASTENING CLAMP
N.001A



4x FASTENING CLAMP WITH LEVER
N.001B



2x VARIABLE THROAT DEPTH CLAMP
N.001C



2x VARIABLE THROAT DEPTH WITH LEVER CLAMP
N.001D



30x FAST ASSEMBLY BOLT 23 PLUS
N.002PLUS



6x ECCENTRIC STOP PLUS Ø100
N.003PLUS



6x STOP PLUS 150
N.004PLUS



4x STOP PLUS 225
N.005PLUS



2x STOP PLUS 500
N.007PLUS



1x PROTRACTOR PLUS
N.008PLUS



4x ANGLE PRECISION SQUARE (FLAT) PLUS 320X150
N.010PLUS



2x ANGLE PRECISION SQUARE (FLAT) PLUS 350X250
N.011PLUS



4x ANGLE BRACKET PLUS 185X175
N.012PLUS



2x ANGLE BRACKET PLUS 200X200
N.013PLUS



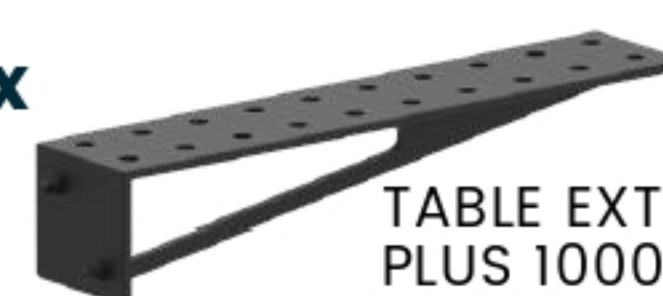
2x ANGLE BRACKET PLUS 300X190
N.014PLUS



2x ANGLE BRACKET PLUS 450X250
N.015PLUS



1x TABLE EXTENSION PLUS 1000X100
N.017PLUS



1x TABLE EXTENSION PLUS 1000X200
N.018PLUS



4x PRISM Ø58MM 130°/90°
N.023



1x WELDING TORCH HANDLE
N.020



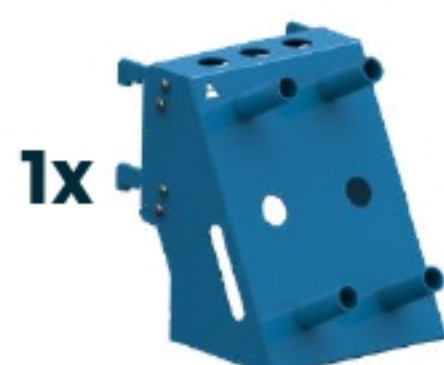
2x FAST ASSEMBLY BOLT SHELF M
T.011B



2x CLAMP SHELF M
T.011D



2x FLATSHELF M
T.011F



1x MIX SHELF
T.011H



1x TOOL TROLLEY M / TOOL TROLLEY L (OPTIONS)
T.012B / T.012A

TOOLKIT^{PLUS} NO. 3

Number of jigs & fixtures included in the kit: 60



TOOLKIT^{PLUS} NO. 4

Number of jigs & fixtures included in the kit: 28

